

How to upgrade ORION DNA GO to ORION PLUS?

- 1、 Download the upgrade software from

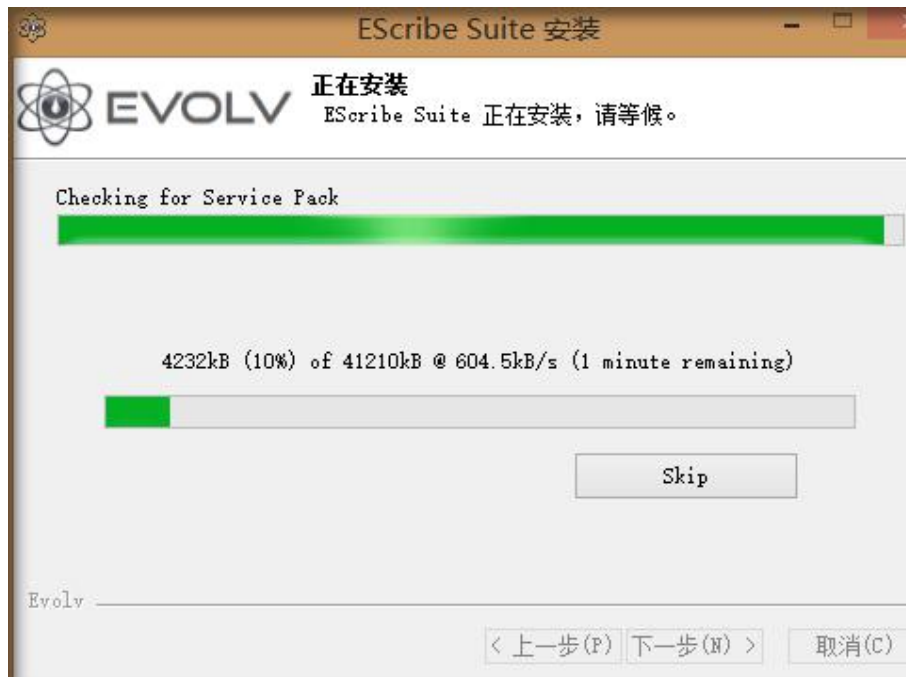
<https://lostvape.com/upgrade-software/>

- 2、 UnZip the file you downloaded(*zip) and open;

- 3、 Install SetupEScribe2_INTL_SP19;



P1. Software SP19



p2. Install SP19

- 4、 Then double click on the SP20 and upgrade to the Version 2.0 SP20.

SetupEScribe2_2019-05-15_INT_SP20 2019-06-14 17:09

P3. Software SP20

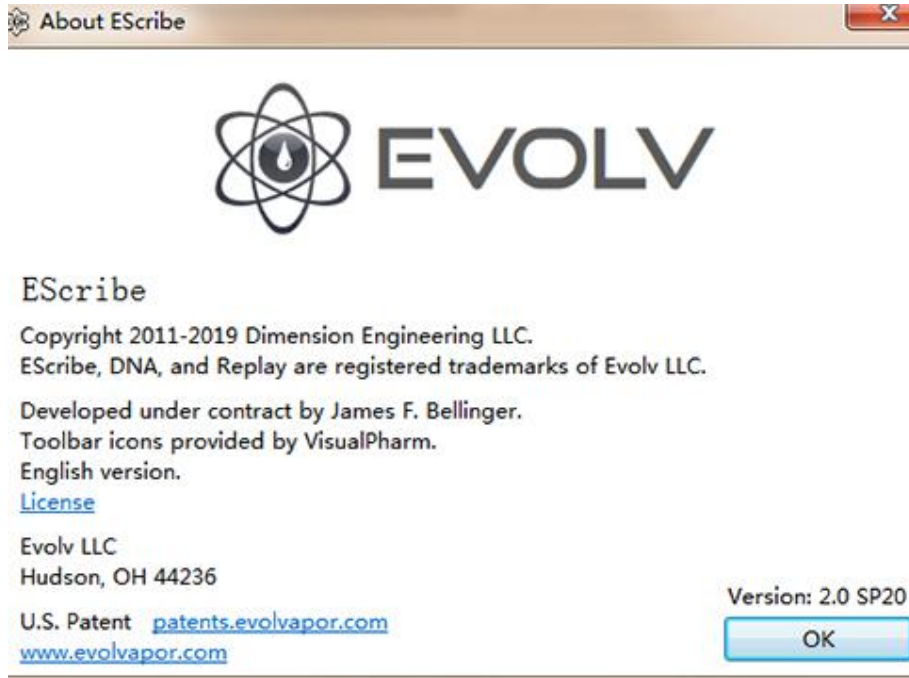


P4. Upgrade to SP20

- 5、 Make sure the software installed is the V2.0 SP20.

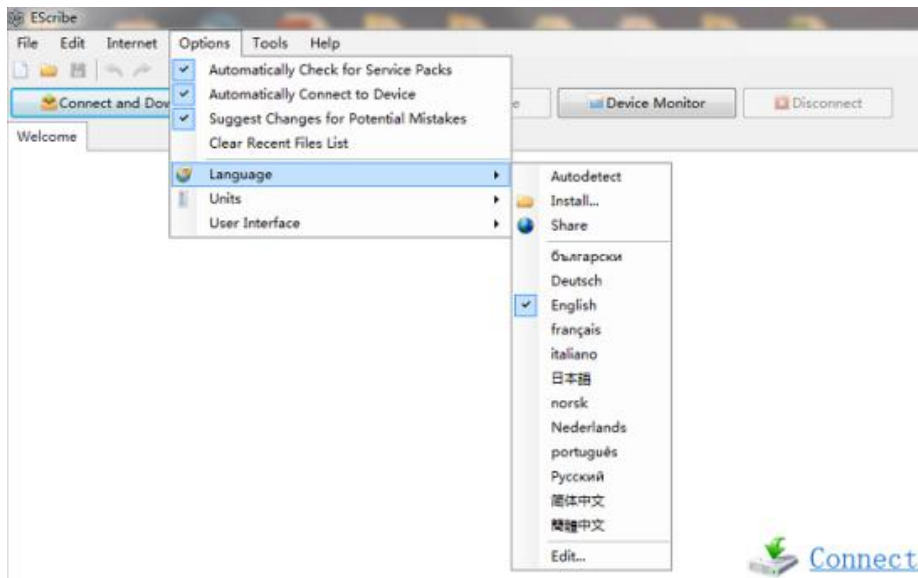
Open the software installed, Choose " Help-About Escribe".





P5. V2.0 SP20 EWrite

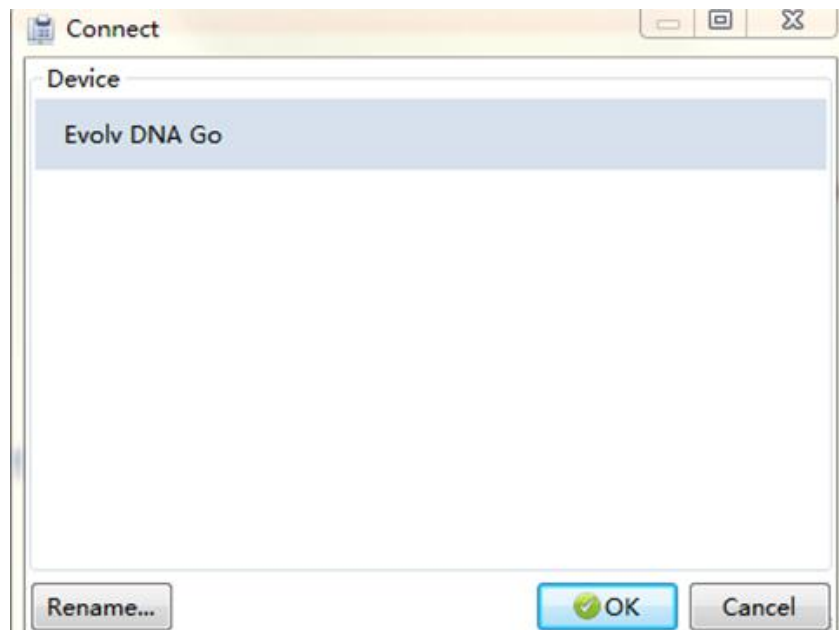
- **6. Choose language.**



P6. Choose Language

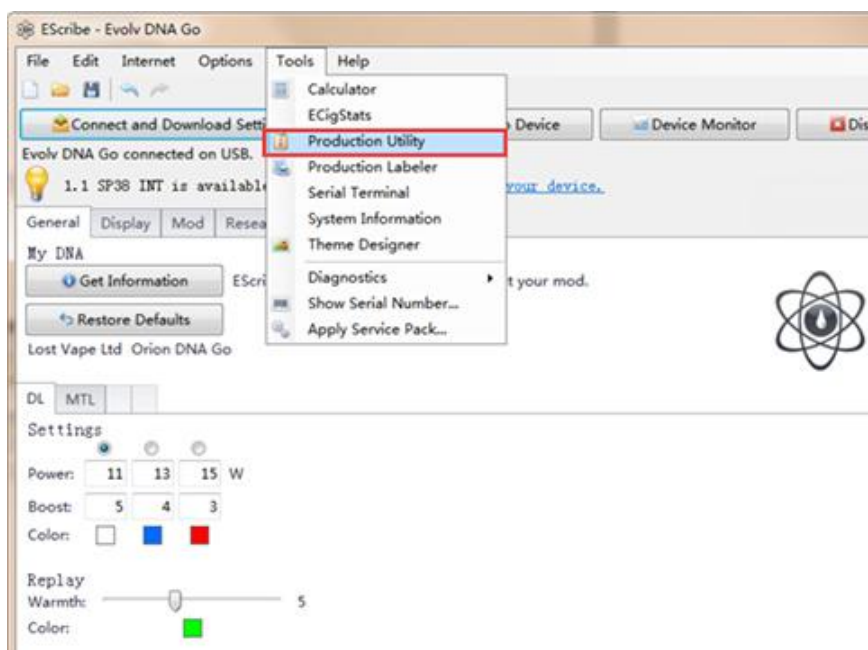
- 7. When connecting to USB, the connection will be prompted, click ok

(Tips: If there's no prompt when you connect the second time, select Evolv DNA GO at the bottom.)



P7. SP20

- 8. Choose "Tools - Production Utility".

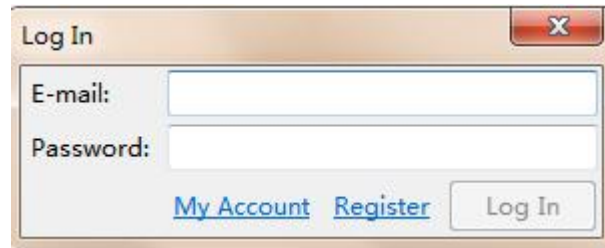


P8. Tools-Production Utility

- 9、 Log in your ESubscribe account or Regist.

Or log in the account we provided:

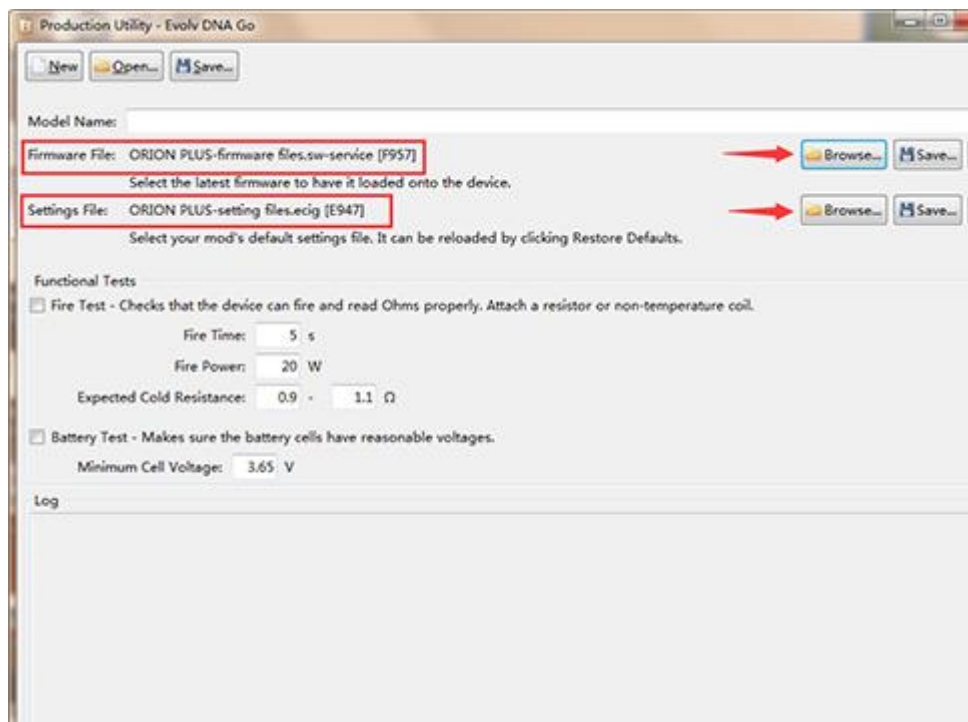
Account: info@lostvape.com Password:lostvape






P9. Log in

- 10、 Click browse and select the firmware and files to upgrade.


Choose “Firmware&Settings files” from the zipfiles you downloaded.



P10. Browse and Select from "Firmware&settings" File

 Firmware&settings	2019-08-20 14:21
 SetupEScribe2_2019-05-15_INT_SP20	2019-06-14 17:09
 SetupEScribe2_INTL_SP19	2018-09-26 14:11

P11. Files' position

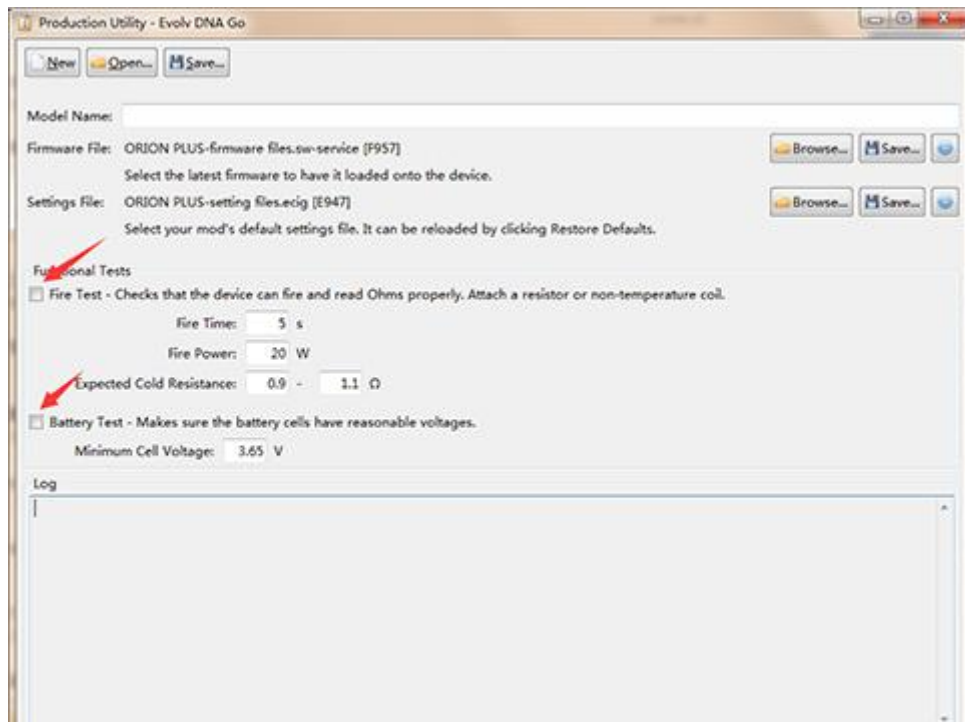
 ORION PLUS-firmware files.sw-service	2019-08-20 14:17
--	------------------

P12. Firmware Files

 ORION PLUS-setting files	2019-08-20 14:17
---	------------------

P13. Settings Files

- **11. Please cancel the "Fire test" and "Battery test".**

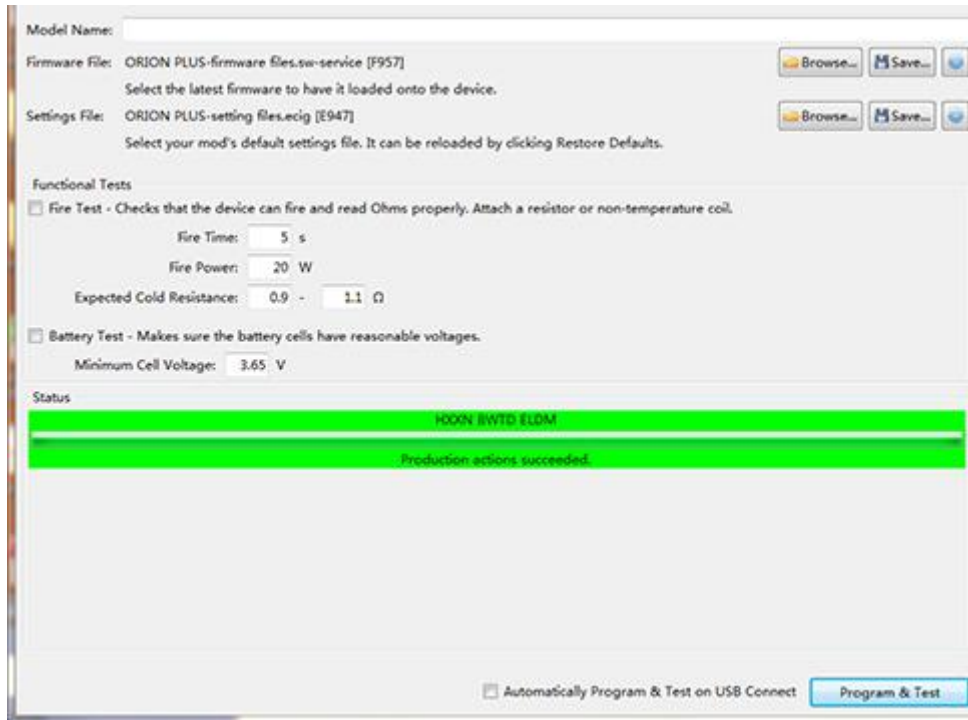


P14. Cancel the "Fire test" and "Battery test"

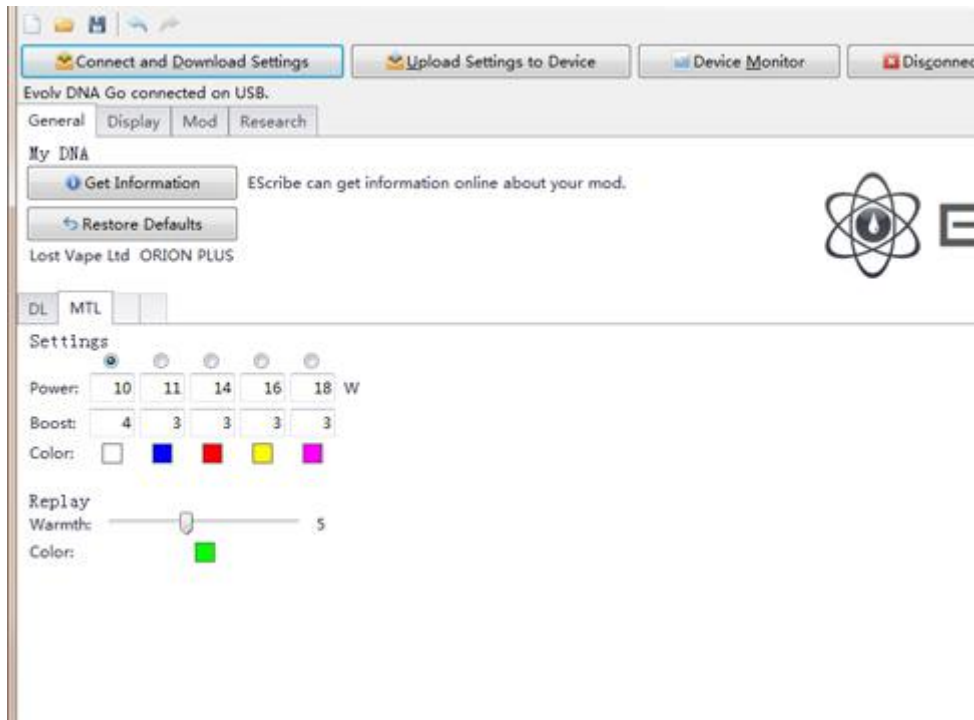
- **12. Click "Program&Test" button and start upgrade.**

When the device flashes green light, the upgrade is successful.

(Tips:Do not touch the USB cable during the upgrade process.)



p15. Click "Program&Test" and finish



p16. 5 power levels

If you have any problems while upgrade?

*Send an email to info@lostvape.com with the heading "Upgrade Problem" and
we'll get back to you in three work days.*